

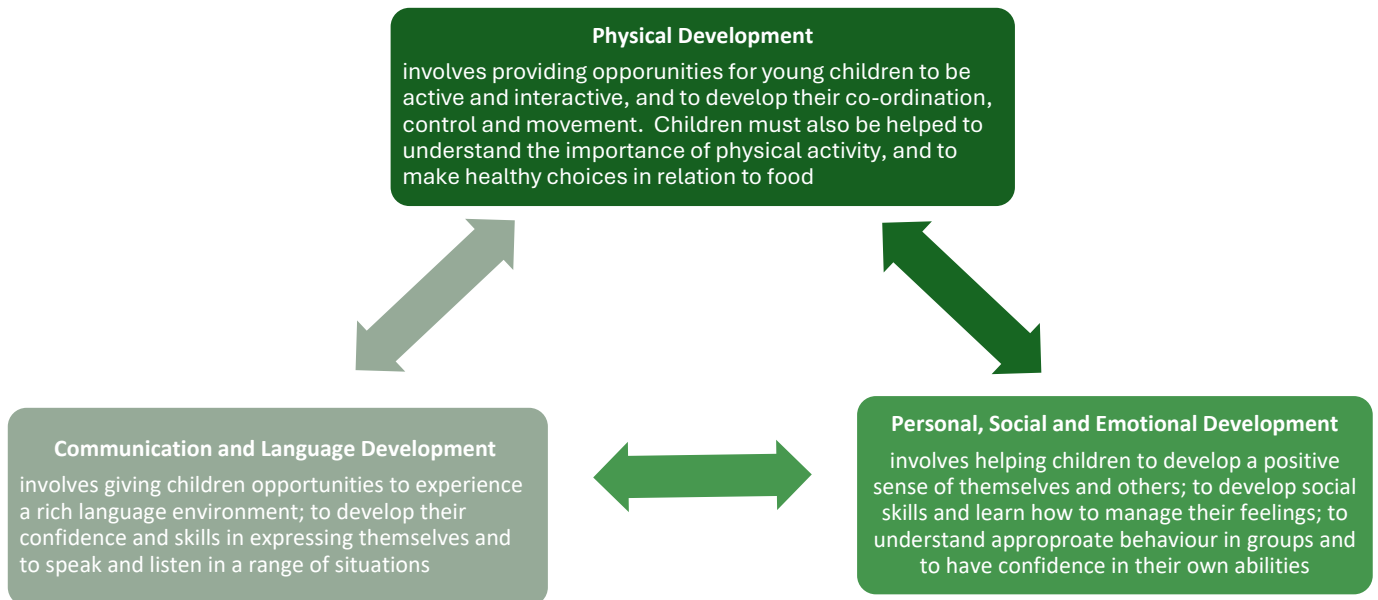


### EYFS Areas of Development

Our goal at Marsh Green is to ensure all children learn and develop well, are kept healthy and safe and have the knowledge and skills they need to start school.



Marsh Green follow the DfE statutory framework for the Early Years Foundation Stage. The framework is made up of three prime areas: Communication and Language, Physical Development and Personal, Social and Emotional Development.



The four specific areas are Literacy, Mathematics, Understanding the World and Expressive Arts and Design. All children are accessing these areas through child led play, and we implement 'In the Moment Planning', which involves observing and interacting with children as they pursue their own interests, also assessing and moving.

Involves providing children with opportunities to develop and improve their skills in counting, understanding and using numbers, calculating simple addition and subtraction problems, and to describe shapes, spaces and

### Mathematics

Involves encouraging children to link sounds and letters and begin to read and write

### Literacy

Involves guiding children to make sense of their physical world and their community through opportunities to explore, observe and find out about people, places, technology and the environment.

### Understanding the World

Involves enabling children to explore and play with a wide range of media and materials, as well as providing opportunities and encouragement for sharing their thoughts, ideas and feelings through a variety of activities in art, music, movement, dance, role-play and design technology.

### Expressive Arts and Design